

**CAUTION: ALWAYS INSTALL PRODUCT FROM LEFT TO RIGHT AND REMEMBER THAT POLYMER UNDERGOES EXPANSION/CONTRACTION DUE TO TEMPERATURE VARIATIONS. FOR A BETTER LOOK WE RECOMMAND TO INSTALL PRODUCT ON FLAT SURFACES (EX: PLYWOOD PANELS OR OSB PANELS). IF SECTIONS ARE INSTALLED ON A WALL WITH FURRINGS, FURRING STRIPS MUST BE INSTALLED OBLIQUELY AND SPACED BY 8”(20,32CM).**

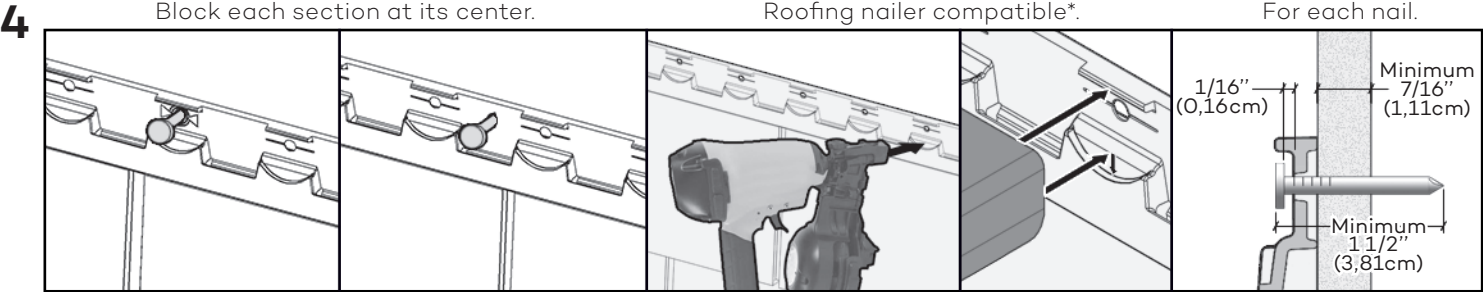
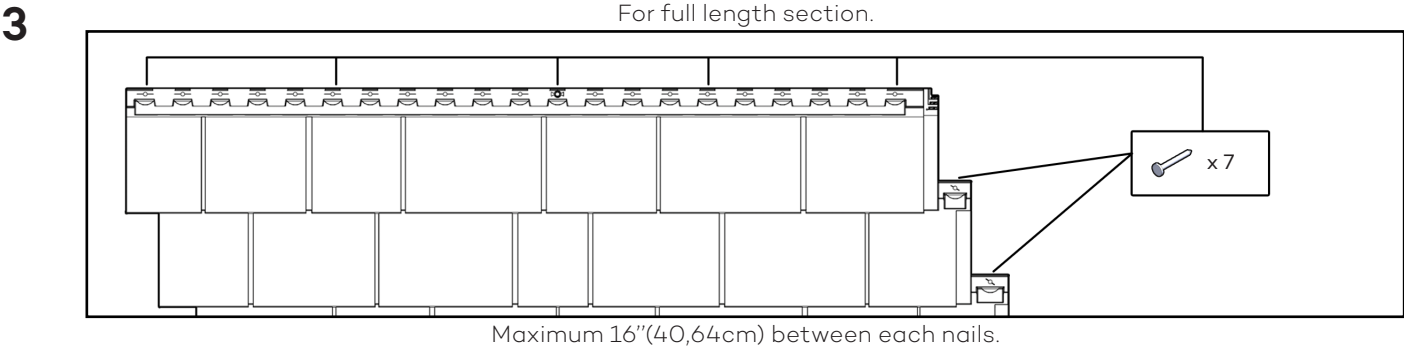
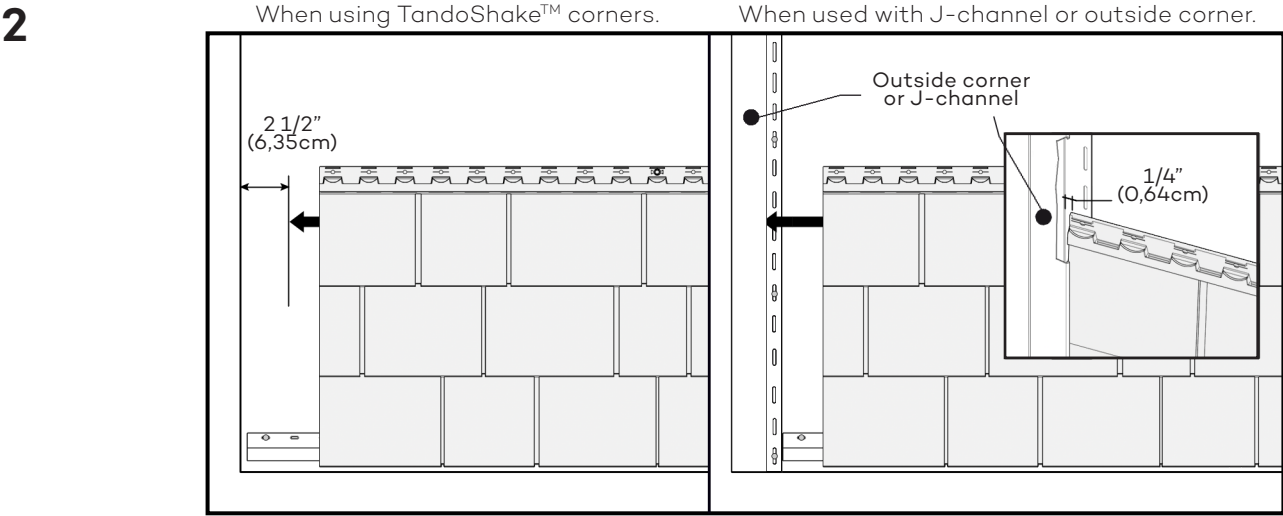
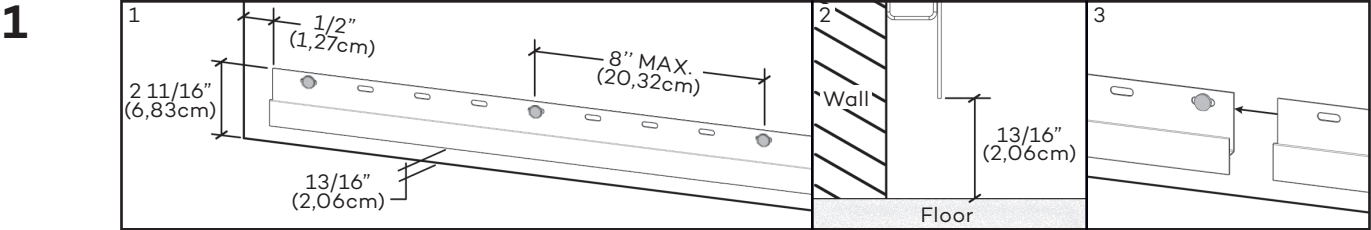
FRANÇAIS  
AU VERSO

ESPAÑOL

PORTUGUÊS

РУССКИЙ

POLSKIE

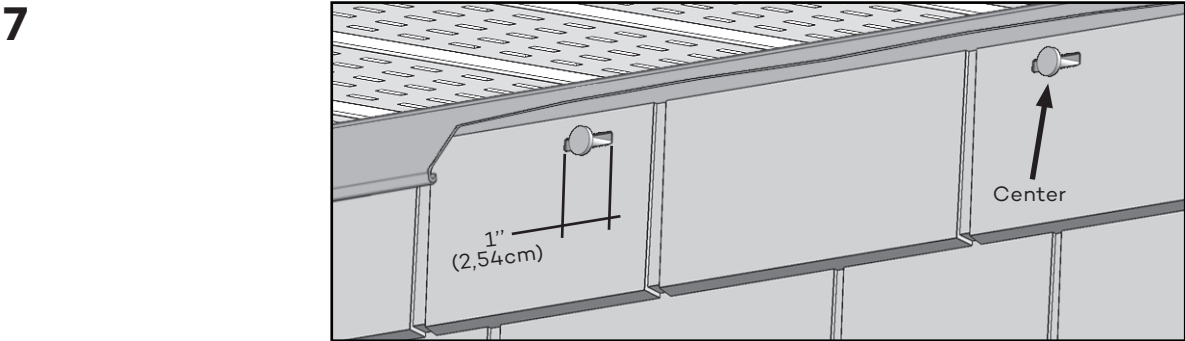
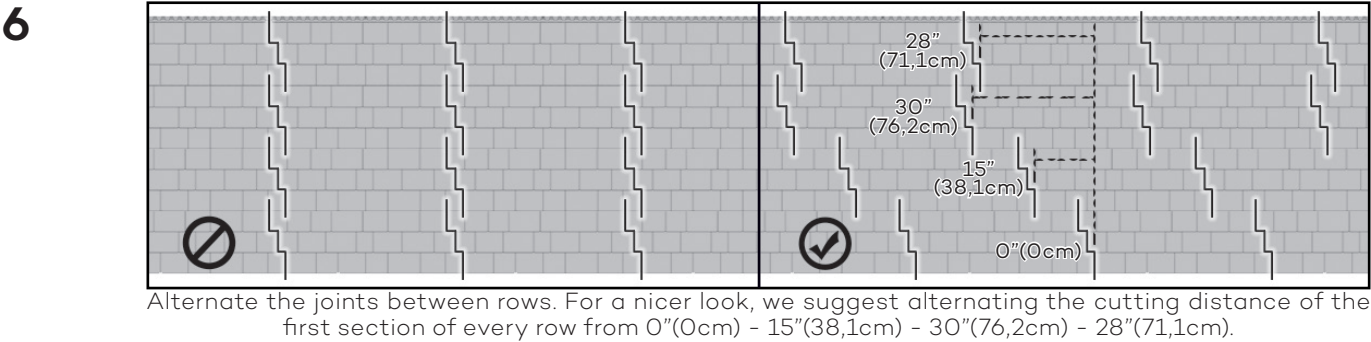
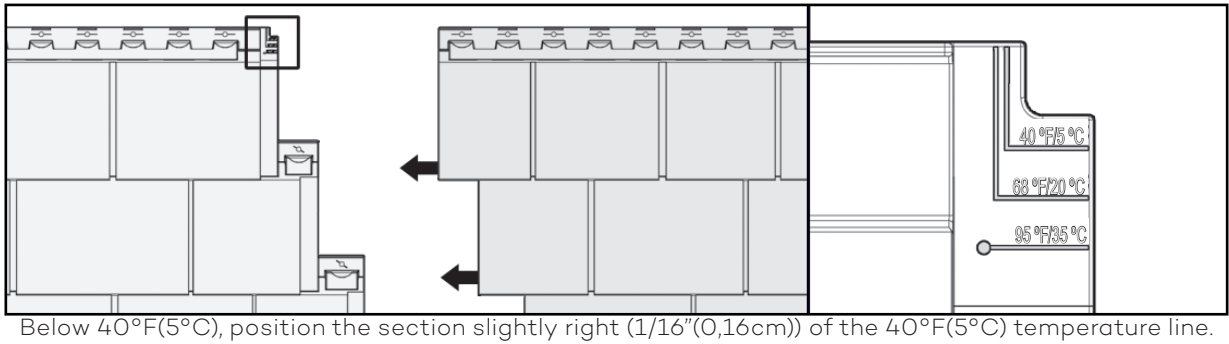


When installing a full section, nail in the center hole first. When installing a cut section, nail in its center. For each nail, leave a gap between nail head and section. When using a roofing nailer, adjust its tip at the highest position and the air pressure according to the substrate in order to leave the required gap.

\* Roofing nailer as Bostitch RN46 and Hitachi NV45.

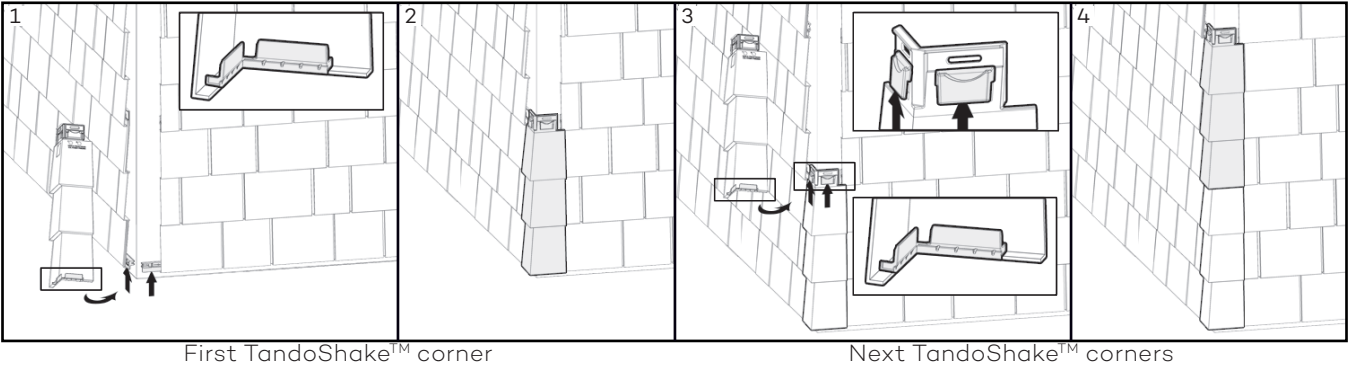
**Note:** For use in Miami-Dade and Florida High Velocity Hurricane Zones, please refer to installation instructions on Miami-Dade Approved Product Listing, available on our Tando website Resources page.

**5** Install sections and space equally. Refer to temperature marks that show the outside temperature the closest to that during installation.



If you need to attach the section in an area other than the installation hole, create a 1" (2,54 cm) long slot to allow nailing. Always nail in the middle of the slot.

**8 CORNER INSTALLATION**



First TandoShake™ corner

Next TandoShake™ corners

See [www.tandobp.com](http://www.tandobp.com) for the complete installation guide.

